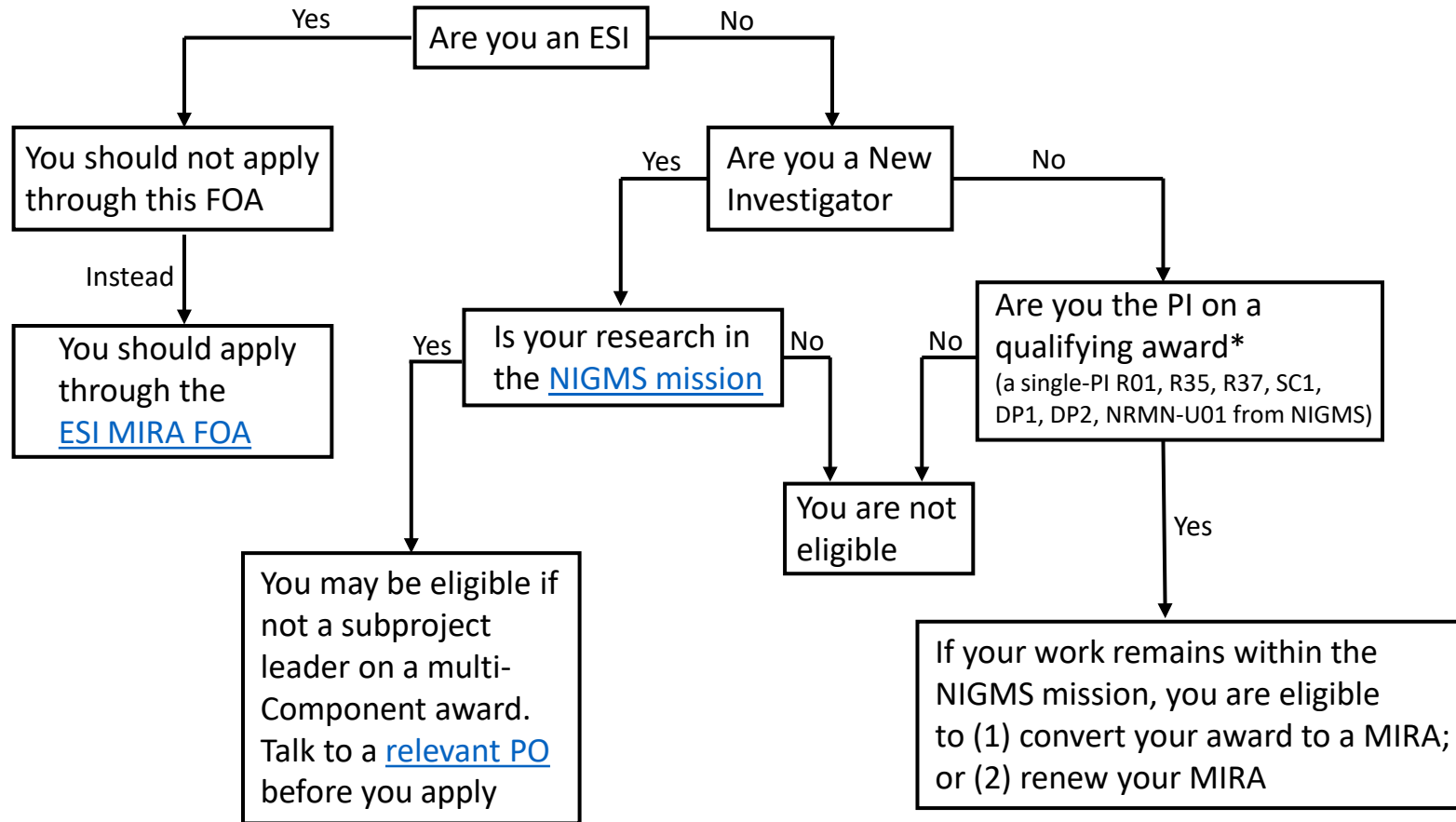


A simplified decision tree to determine a PI's eligibility for MIRA (PAR 22-180)



*The eligibility for investigators funded with a MIRA extends to the end of the second fiscal year following the one in which the funded MIRA was originally set to expire. The eligibility for investigators funded with at least one single-PD/PI R01 or equivalent award extends to the end of the fiscal year following the one in which the funded single-PD/PI R01 or equivalent award was originally set to expire.

The scientific mission of NIGMS can be found at <https://nigms.nih.gov/about-nigms/who-we-are/overview>.