



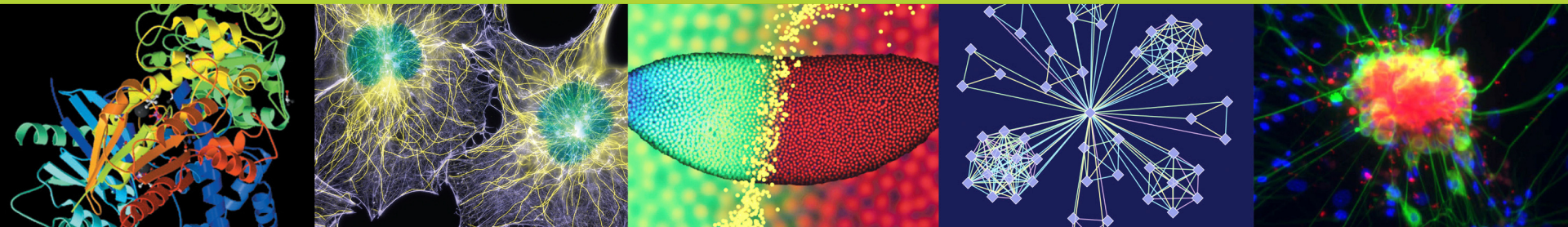
National Institute of  
General Medical Sciences



# Evaluation of the NIGMS Support for Competitive Research (SCORE) Program

*Peter Espenshade, Ph.D.  
Johns Hopkins University  
Co-Chair*

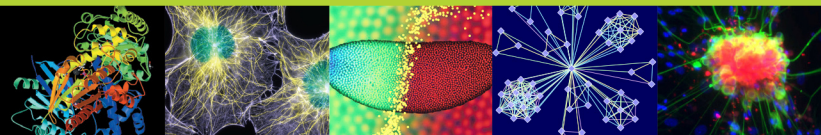
*SCORE Evaluation Working Group*



# SCORE Evaluation

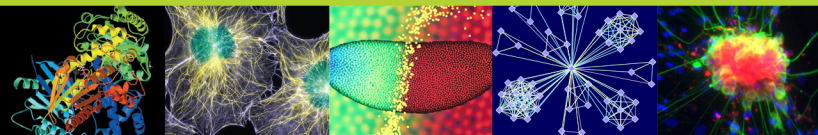
---

- **S**upport for **C**ompetitive **R**esearch Program
  - Comprises 3 mechanisms (SC1/SC2/SC3) to support research and career development at institutions serving underrepresented groups.
    - Awards are made for investigator-initiated projects.
    - Investigators are ultimately expected to obtain and transition to non-SCORE funding.
  - A working group of Council was convened to evaluate the SCORE program:
    - Co-chairs: Kaye Husbands Fealing, Ph.D. and Peter Espenshade, Ph.D.
    - Panel: Drs. Squire Booker, Goldie Byrd, Lourdes Echegoyen, Elena Bastida, Bill Gern, Mark Lee, and Carlos Gutiérrez.
  - Comprehensive data on SCORE applications, awards, trends, and outcomes were provided by NIGMS OP&E.



# SCORE Funding Mechanisms

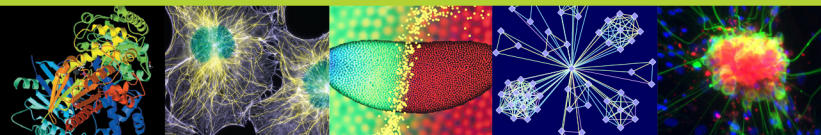
Mechanism	\$/Year (Direct Costs)	# Years	Renewals?	PI eligibility	Award Goals	Post-Award Goals
SC1	250k	4	1 only	Established investigators but with no prior non-SCORE support.	Augment skills/productivity. Improve quantity/quality of data and publications.	Non-SCORE support
SC2 (primary comparator: <b>K01</b> )	100k	3	No	No prior support. Established advisor with substantial NIH funds required.	Generate preliminary data, test new idea.	Other external research support (could be SC1, SC3, or anything else)
SC3 (primary comparator: <b>R15</b> )	75k	4	Indefinite	No prior non-SCORE support. Progressive development of publication record required.	Research project of limited scope.	Non-SCORE support
R01	250k+	4	Indefinite	Any PI with requisite skills, knowledge, and resources.	Discrete, specified, circumscribed project.	R01 Renewal, if warranted



# Evaluation Questions

---

- 1) Is the SCORE program meeting its objectives?
- 2) Are the current program objectives the right objectives?
- 3) What challenges or difficulties has the SCORE program faced?
- 4) What are key findings and recommendations?



# Evaluation Findings

---

## 1) Is the SCORE program meeting its objectives?

Increases in research competitiveness, number of underrepresented investigators, number of qualifying laboratories, but *few investigators transitioned to non-SCORE funding.*

## 2) Are the current program objectives the right objectives?

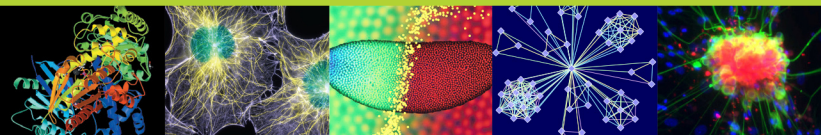
*While some current objectives are appropriate, others require substantive change.*

## 3) What challenges or difficulties has the SCORE program faced?

- Institutional support for PI and institutional readiness and commitment to growth are uneven.
- SCORE is too concentrated in a few college/university systems.
- Only 30% of SCORE awardees and applicants are racial/ethnic minorities.
- Only 57% of SC2 awardees submit any later/subsequent SCORE applications.

## 4) What are the key findings and recommendations?

*Discussed on following slide.*

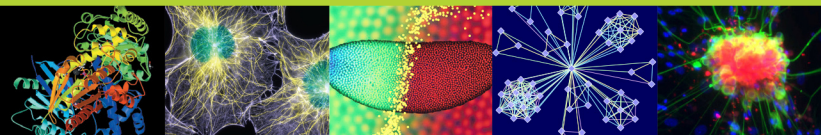


# Recommendations

---

- 1) Modify program objectives to catalyze institutional support for SCORE funded investigators.
- 2) Revise SCORE PI expected outcomes.
- 3) Modify program objectives to prioritize increasing the number of students engaged in quality research.
- 4) Revise or consolidate funding mechanisms.
- 5) Develop prospective evaluation plan that aligns data collection with new objectives.

Note: Both recommendation 1 and 3 are modifications to the objectives, but are provided separately to emphasize priorities.



# Recommendation 1: Modify Program Objectives to Catalyze Institutional Support for SCORE Funded Investigators

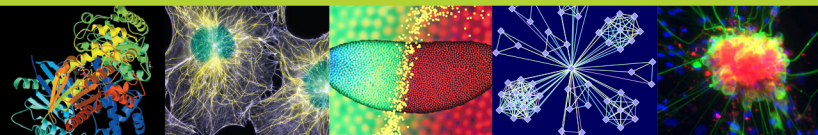
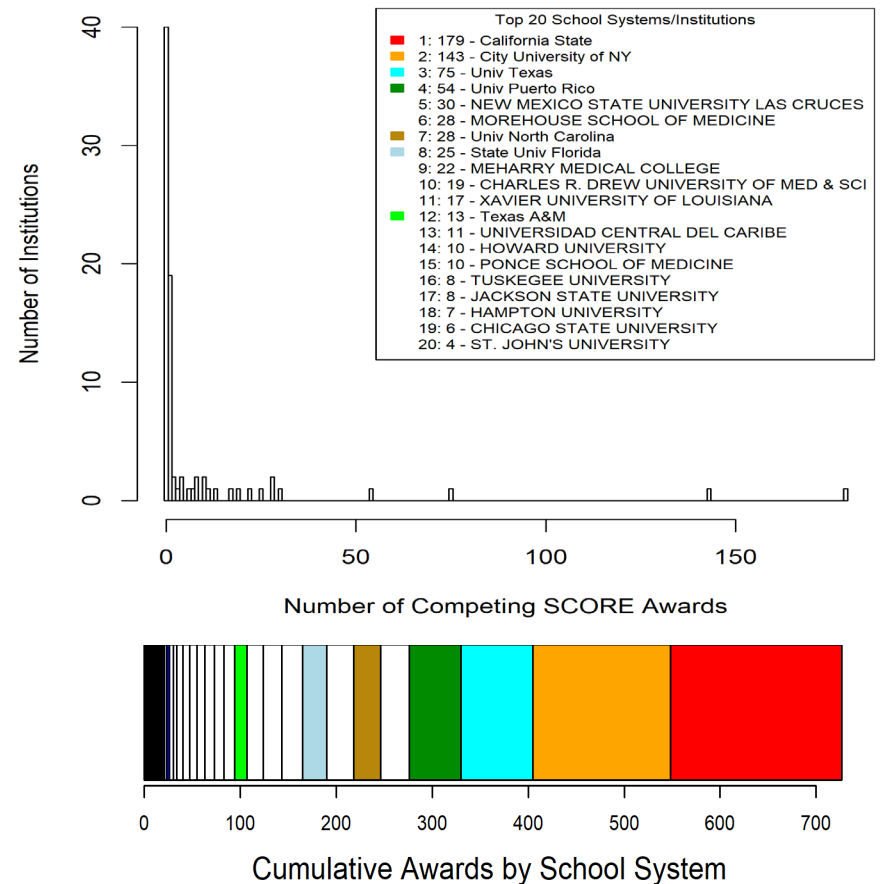
## • Suggested Action Items

- Require plan for institutional development of research capacity.
- Require plan for SCORE PI support and development.

## • Rationale

- Data show awards are **concentrated in a few colleges/university systems**, suggesting varying levels of institutional capacity to support applicants and awardees.
- There is a **need to increase institutional commitment** to growing research capacity through support of individual SCORE investigators.
- There is a **need to catalyze change** in institutional research culture and infrastructure.

Histogram of SCORE Awards by School System (N=83)



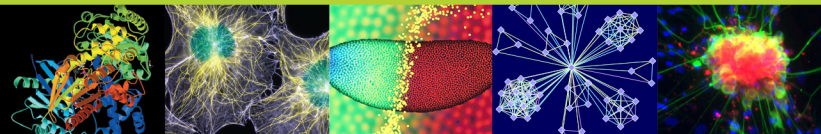
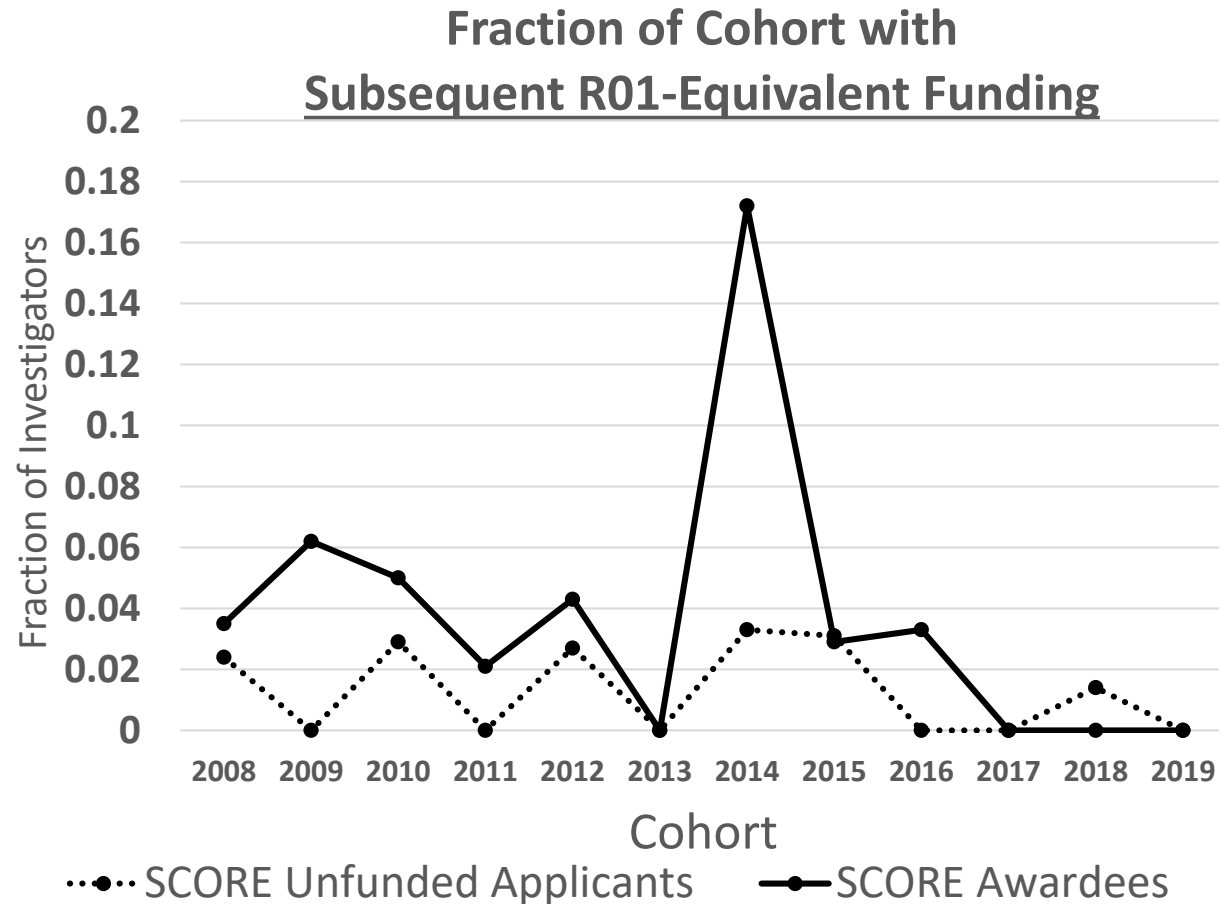
# Recommendation 2: Revise SCORE PI Expected Outcomes

- **Suggested Action Items**

- **Expand qualifying funding** beyond R01.
- **Define competitiveness** to align with SCORE goals.

- **Rationale**

- Research excellence is a priority.
- Data show SCORE awardees rarely apply for or receive R01s.
- “Research competitiveness” is ambiguous.





# Recommendation 3: Modify Program Objectives to Prioritize Increasing the Number of Students Engaged in Quality Research

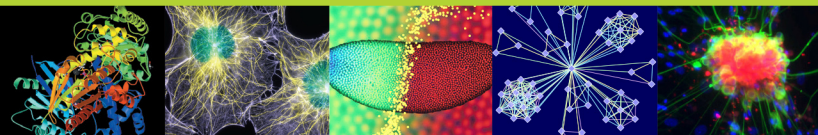
---

- **Suggested Action Items**

- **Clarify student involvement** in SCORE supported research in the FOA.
- **Prepare prospective evaluation** of student involvement in SCORE.

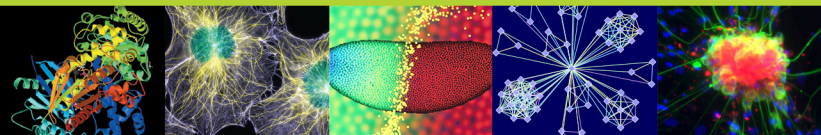
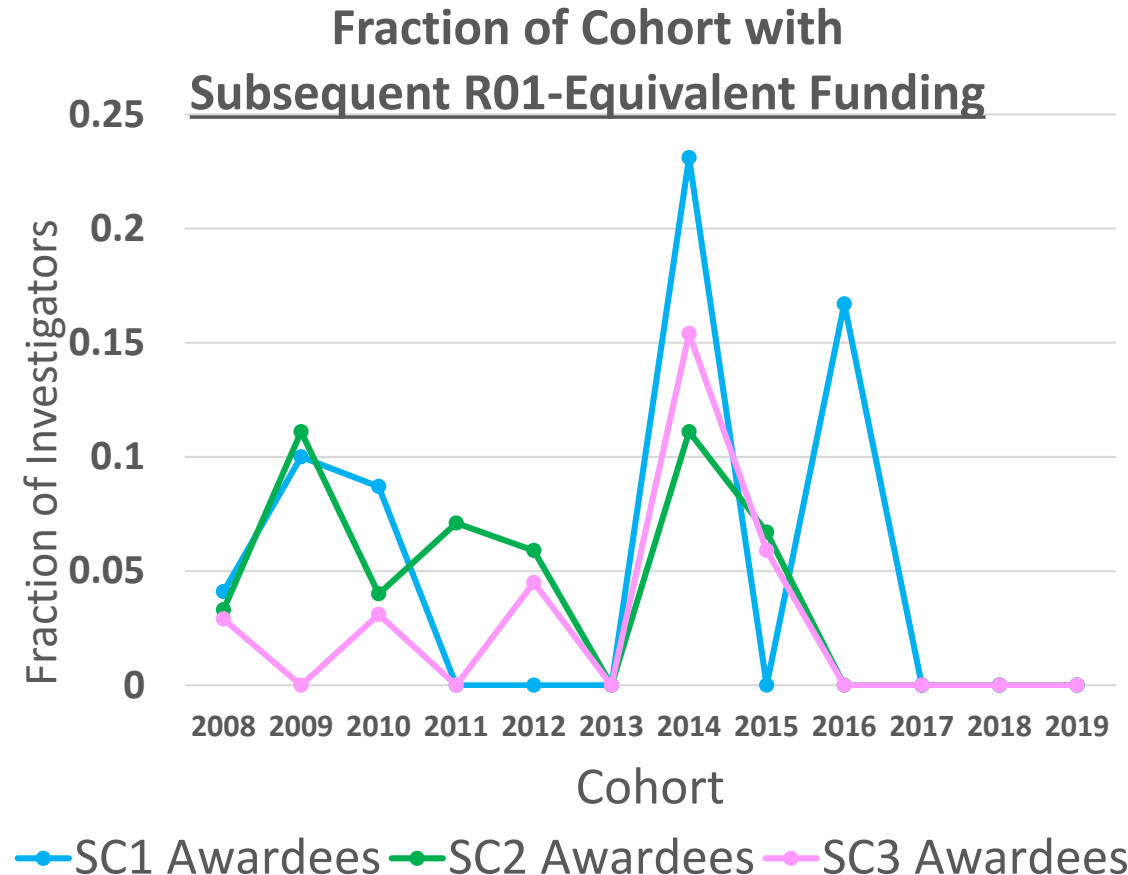
- **Rationale**

- There is a need to:
  - a) Increase the number of underrepresented students engaged in high quality motivating research, and
  - b) Prepare the next generation of underrepresented faculty.



# Recommendation 4: Revise or Consolidate Funding Mechanisms

- **Suggested Action Items**
  - **Eliminate the SC1** mechanism.
  - **Strengthen the SC3** mechanism.
  - **Maintain the SC2** mechanism.
- **Rationale**
  - Allows continued participation in SCORE.
  - Few SC1 awardees received R01 awards.
  - Supports institutional capacity building through continued participation.
  - Stabilizes research opportunities for students.



# Recommendation 5: Develop a Prospective Evaluation Plan That Aligns Data Collection with New Objectives

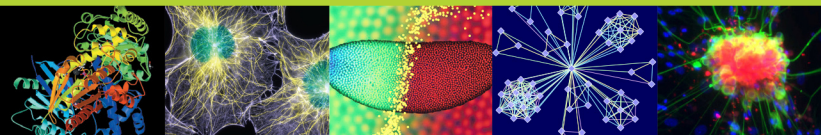
---

- **Rationale**

- Need more robust, complete, and relevant evaluation data.
- Evaluation (including prospective evaluative strategies) is a priority outlined in the NIGMS Strategic Plan.

- **Example**

- Data on students participating in SCORE-supported research is not currently collected but will be necessary to evaluate new objectives.



# Summary

---

- **SCORE is meeting many of its *current* objectives....**
  - SCORE has increased the number of labs and underrepresented PIs at eligible institutions; PI research competitiveness has also increased, but
  - Few SCORE PIs transitioned to non-SCORE funding.
- **Objectives, however, should be examined and appropriately modified.**
  - More emphasis needed on the institutional role in SCORE (e.g., support for PIs, plans for growth).
  - Supporting opportunities for student research should be an explicit program goal.
- **SC1 (\$250k, R01-like) should be eliminated, SC3 (\$75k, R15-like) should be strengthened.**

