



Dialogue With Institutional Leaders About Successfully Navigating the National Institutes of Health (NIH): Strategies for Helping Your Faculty Develop and Submit Competitive Applications

DR. TIFFANI BAILEY LASH (NIBIB)

DR. ARIA DAVIS CRUMP (NIDA)

MAY 20, 2024

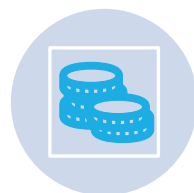
Understanding How NIH works



**Institutes and
Centers (ICs) &
Strategic Plans**



Funding Cycles



**Grant
Mechanisms**



**NOFOs and
NOSIs**



NI & ESI Policies

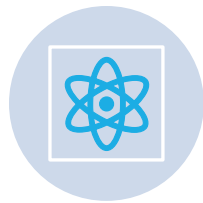


eRA Commons

Making Applications Competitive



Review Criteria:
Understand how scientific merit is assessed.



Scientific Premise and Preliminary Data:
Promote and defend the project's potential impact.



Literature Review:
Ground your proposal in existing research.



IC Priorities: Align your proposal with Institute/Center priorities.



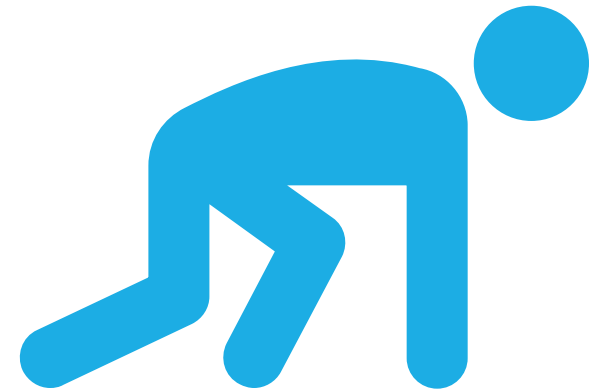
NIH RePORTER: Learn what (and whom) NIH has funded.



Investigators: Build your dream team and highlight their qualifications.

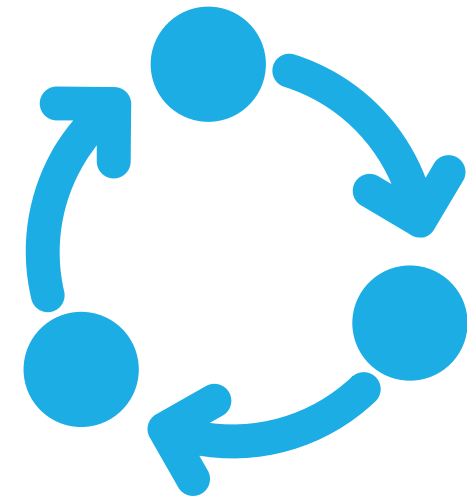
Preparing to Submit Your Application to NIH

- **Publish, Present, and Promote Your Ideas**
- **Expand Colleague Network**
- **Seek Program Officer (PO) Advice**
- **Utilize NIH Programs and Resources**
 - ✓ NIH Extramural Nexus
 - ✓ NIH Guide to Grants and Contracts
 - ✓ NIH All About Grants Podcast
 - ✓ CSR Early Career Reviewer Program



If at first you don't
succeed, **RESUBMIT**

Discuss your summary statement
with your program official/director
prior to resubmission.



Establishing a program of research

Disseminate results

Maintain collaborations, and build new ones

Grow and develop the science

Lead and mentor

After an investigator receives a first NIH award



Dialogue: Let's hear from you

**HOW CAN NIH HELP YOU BETTER SUPPORT FACULTY
AT YOUR INSTITUTION?**



Our Contact Information

DR. TIFFANI BAILEY LASH (NIBIB) – TIFFANI.LASH@NIH.GOV

DR. ARIA DAVIS CRUMP (NIDA) – ARIA.CRUMP@NIH.GOV