



National Institute of
General Medical Sciences



Bridges to the Baccalaureate Program Q&A Session

August 1, 2024

In the Room



Laurie Stepanek



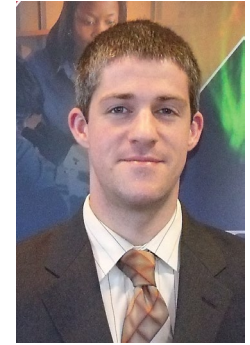
Shakira Nelson



Marci Wright



Sonia Ortiz-Miranda



Justin Rosenzweig

Program
questions

Review
questions

Budget
questions

Bridges to the Baccalaureate (B2B) Program Goals

PAR-22-125

Support **strong institutional partnerships** between associate and baccalaureate degree-granting institutions to develop a diverse pool of research-oriented undergraduates who **transfer** from an associate-degree granting institution to a baccalaureate degree-granting institution and **complete a baccalaureate STEM degree**, positioning them to pursue research-oriented biomedical higher degree programs or enter careers in the biomedical research workforce.

B2B Program Overview

- **Bridges awards** provide for the cost of appointed trainee stipends, tuition and fees, and training related expenses, including health insurance, in accordance with the approved NIH support levels.
- **Proposed Programs** are expected to incorporate didactic, research, mentoring, and career development elements to prepare trainees with the technical, operational, and professional skills required for careers in the biomedical research workforce.

B2B Program Eligibility

- Institutions of Higher Education (Public/Private)
- At least one partner must be an institution that offers the associate degree as the highest STEM degree.
- At least one partner must offer baccalaureate degrees in disciplines related to the biomedical sciences.
- Any partner can be the applicant institution.
- An institution is not allowed to serve as the applicant institution on more than one B2B Program.

Progress Report Section (only for T34 renewals)

- Program overview (5 page limit)
 - Demonstrate that the program successfully trained a diverse pool of individuals who have the technical, operational, and professional skills to transition into further training or careers in biomedical research.
 - Describe successes and challenges with regards to implementing the programmatic elements described in the previous application.
 - Provide evidence that the specific and measurable objectives described in the previous application were achieved and if not, provide a justification for failing to achieve the objectives.
- Progress of those appointed to the grant (1 page per trainee)

Updated Budget Information

(see [NOT-GM-24-030](#))

- Funds provided for the summer research experience increased to \$4,000 per Bridges trainee.
- Maximum training related expenses (TRE) limit increased to \$12,500/trainee/year.
- Maximum cap for the TRE portion of the proposed budget increased to \$200,000/year.
- There are not firm cost limits for allowable TRE-associated expenses (for example, salary support or evaluation costs).
- *NIGMS expects organizations to prioritize the provision of trainee benefits, such as health insurance, using TRE funds.*
- *TRE expenses must be justified as specifically required by the proposed program.*

Review Considerations

- The review panel will assess your application against the review criteria described in Section V of the NOFO.
- Please read these review criteria while preparing your application to make sure all the required information is included and is submitted in the correct location (per NOFO instructions).
- Submit early so that you have time to correct any errors or missing sections in the application.

Common review issues

Common Non-Compliance issues (before review):

- **Letters of Support** - Eligibility information and letters from partnering institutions in the specified format (as described in B2B NOFO).
- **Appendices** - Only those accepted in the *NIH policy on appendix materials* and the **B2B** NOFO. Check they are submitted in the correct location.
- **Page limits** - Most sections have [page limits](#). Please stay within those limits.
- **Incorrect data tables** - Make sure you only include the requested data tables (not less/more).

Common issues during review:

- Missing to address any shortcomings up front and plans to improve.
- Table and text information that do not match.
- Biosketches not tailored for roles as student mentors/science training.
- Unclear number of training positions (budget and text do not match).

Important Dates

Notice of Funding Opportunity (NOFO)	<u>PAR-22-125</u>
Application Due Date	September 25, 2024
Scientific Merit Review	March 2025
Advisory Council Review	May 2025
Earliest Budget Start Date	August 2025

Q&A Time